



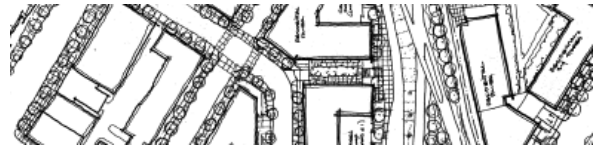
**STRONG TOWNS**



## **Land Use and Regional Strength**

Minnesota Brownfields: The Economics of Revitalization Forum

February 3, 2011



# Metropolitan America



**STRONG TOWNS**



## Changing Market Landscape

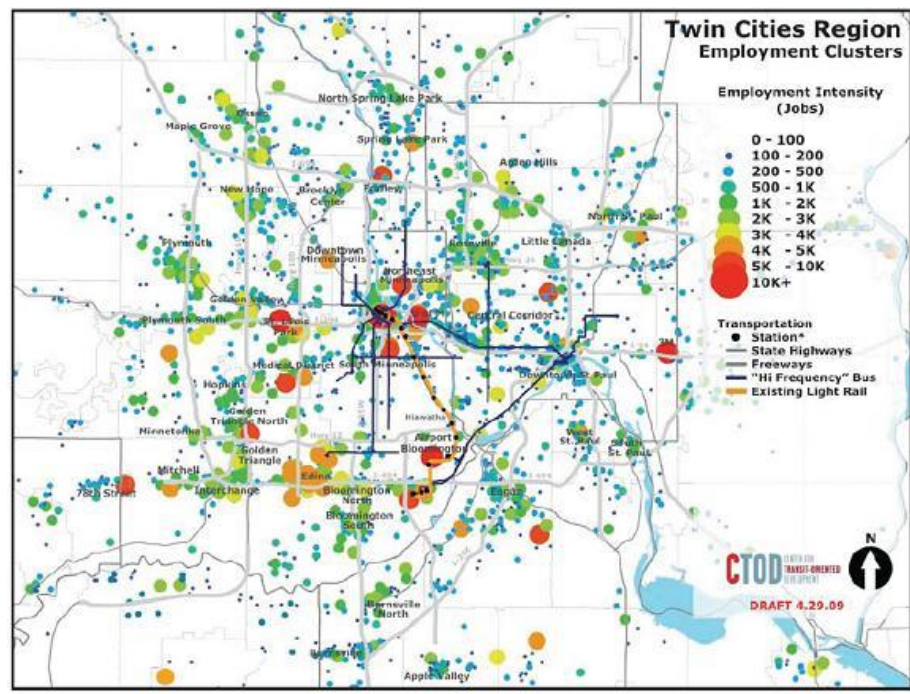
- Metro prosperity depends on effective, region-scale systems
- Metropolitan areas are becoming the fundamental unit for national economic development
- The most dynamic, effective regional economies are positioned to compete on an international scale, across metro areas

**STRONG TOWNS**

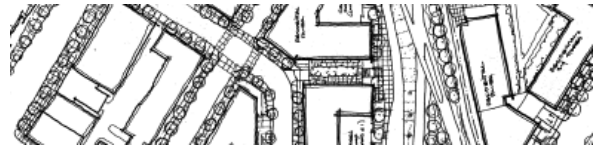


# Key Economic Imperatives

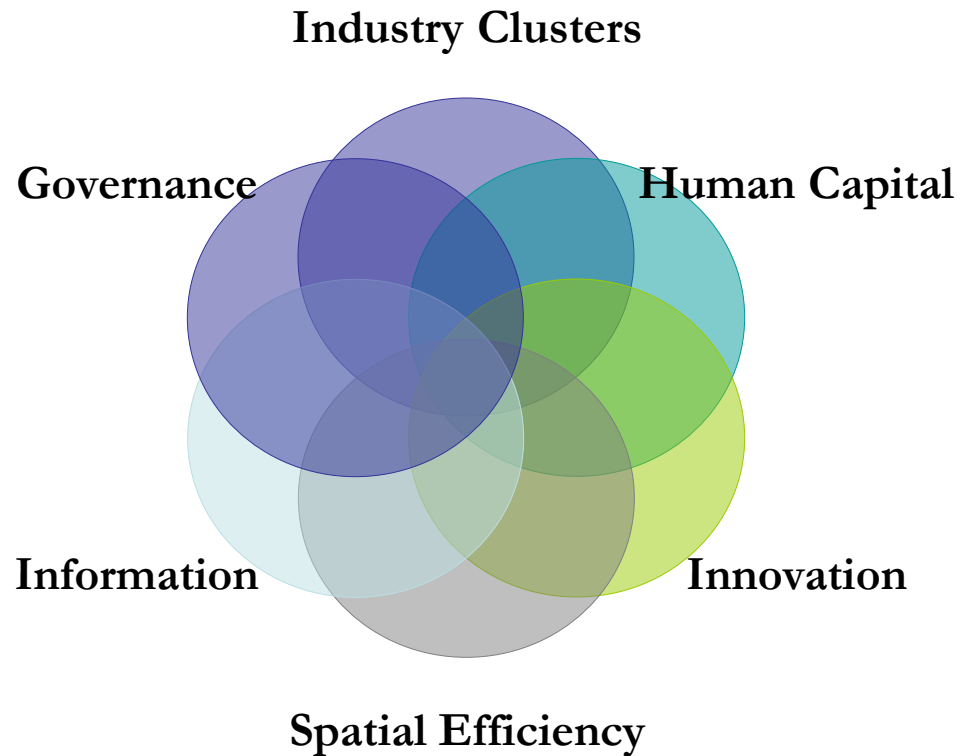
- Expand exports
- Create low-carbon solutions
- Strengthen innovation
- Provide a broad base of economic opportunity to citizens



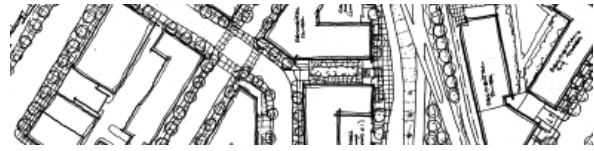
**STRONG TOWNS**



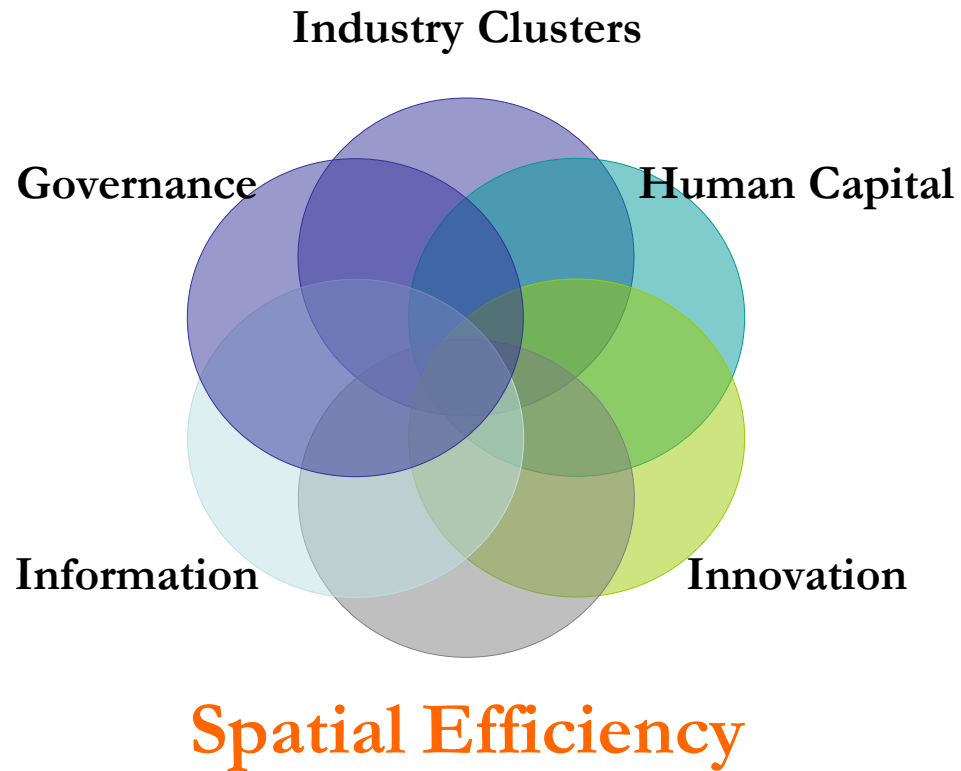
# Six Critical Systems



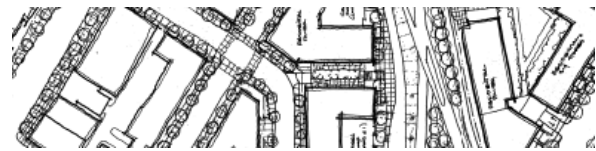
**STRONG TOWNS**



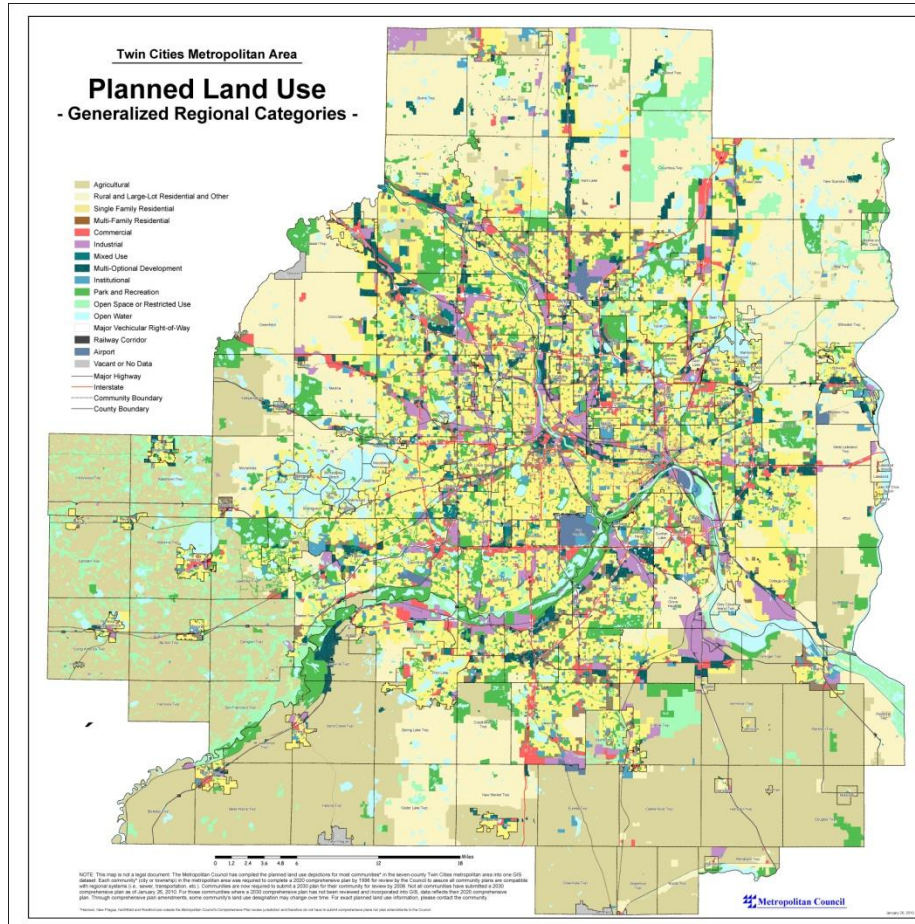
# Six Critical Systems



**STRONG TOWNS**



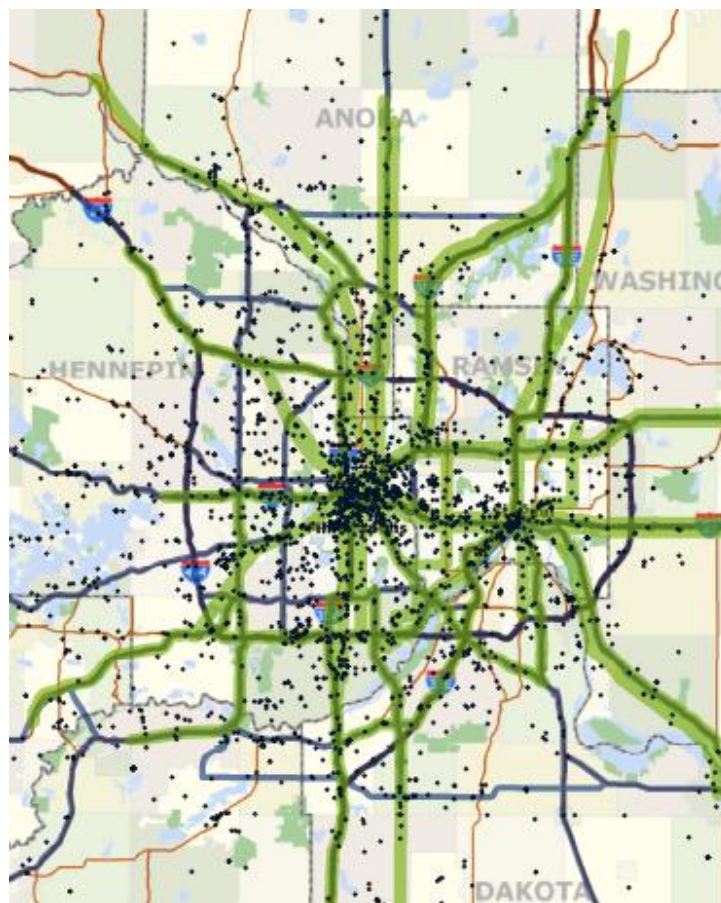
# Land Recycling



**STRONG TOWNS**



## Land Recycling is Critical



**STRONG TOWNS**



Thank You

**Jon Commers**

Strong Towns

[www.strongtowns.org](http://www.strongtowns.org)

[commers@strongtowns.org](mailto:commers@strongtowns.org)

**STRONG TOWNS**

Donjek

[www.donjek.com](http://www.donjek.com)

[commers@donjek.com](mailto:commers@donjek.com)

[regionalbusinessplan@donjek.com](mailto:regionalbusinessplan@donjek.com)



Ph. (651) 645-4644





# Changing Market Landscape

## 25 Cities with Highest Number of Selected Brownfield Sites

		Ranked by	
		Quantity of Ranked by Sites	
	Sites	Sites	per Capita
Minneapolis	741	1	11
St. Paul	353	2	18
Duluth	180	3	9
Bloomington	136	4	14
St. Cloud	122	5	12
Rochester	87	6	24
Mankato	80	7	8
St. Louis Park	72	8	15
Fergus Falls	72	8	2
Eagan	72	8	20
Plymouth	66	11	21
Shakopee	60	12	13
Alexandria	58	13	4
Winona	56	14	10
Edina	53	15	19
Burnsville	53	15	23
Blaine	51	17	22
Moorhead	49	18	17
Roseville	48	19	16
Bemidji	48	19	5
Hopkins	47	21	7
Brainerd	47	21	6
Grand Rapids	46	23	3
Coon Rapids	45	24	25
Walker	44	25	1

